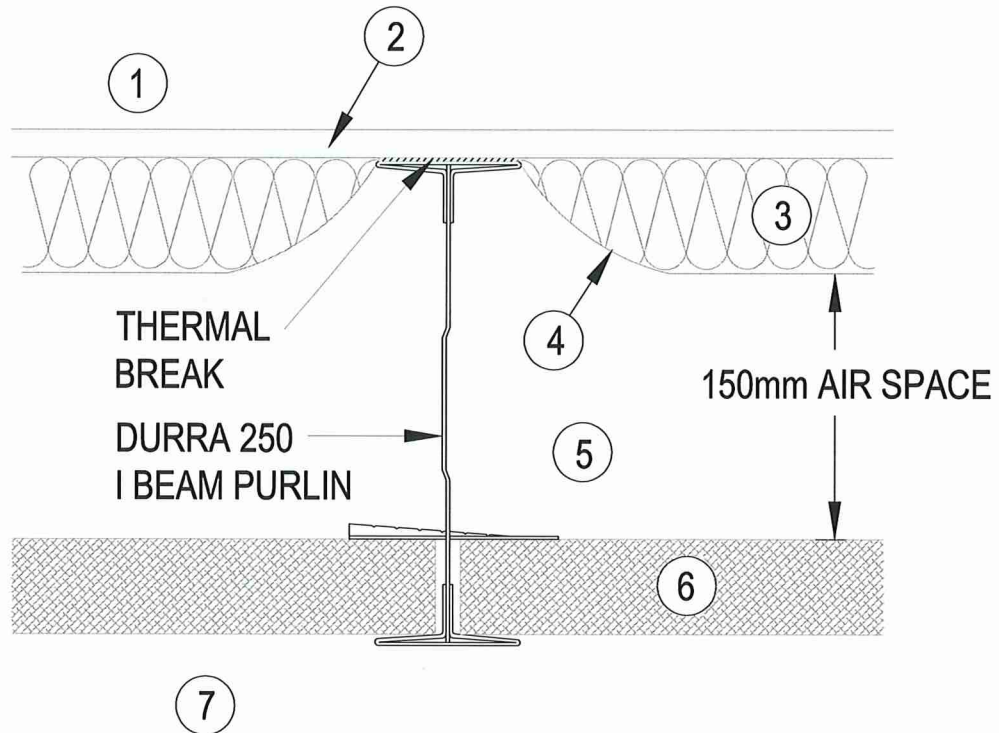


2.1.4

Thermal Performance

Analysis Of Durra Roof/Ceiling System - Low Pitch 0-10°

Total R-Value Calculation - Guidance Values



REF	PROPERTIES	THERMAL RESISTANCE R (M ² K/W)
		HEAT FLOW DOWN - SUMMER
1	Outdoor air film	0.04
2	Metal deck roof	0.00
3	80mm glasswool insulation blanket (uncompressed)	1.78
4	Reflective foil laminate (sisalation)	0.00
5	Unventilated reflective airspace	1.61
6	S50 Durra Panel	0.62
7	Indoor air film	0.16
TOTAL R-VALUE		4.21

Note 1: Roofing insulation blanket must be provided with sufficient space to recover its nominal design thickness between purlins. As roof safety mesh is not required for use with Durra Panel roof / ceiling systems, the insulation blanket can be readily dished between purlins with enough space to recover nominal design thickness and stated R Value level of performance.

Note 2: Additional insulation can be added to the assembly to suit the level of thermal insulation required.